



VILLAS AT THE HEART OF THRISSUR TOWN

1 KM FROM SWARAJ ROUND THRISSUR



ABOUT US

AKSHAYA PROPERTIES & DEVELOPERS is one of the leading real estate developers in the beautiful city of Thrissur, the cultural capital of Kerala. Akshaya brings many years of experience in real estate development combined with a proven track record of architectural finesse, quality construction and superior customer service. All our homes have been perfected to the last detail to provide you with the best quality construction for your home.

Despite the bleak scenario in the construction industry, AKSHAYA PROPERTIES has embarked on a number of apartment and commercial complex projects and this reflects the company's strong foot holds in the market. Our success saga is attributed to the single-handed efforts of its stalwart Mr. Jooju Vasudevan, a renowned real estate developer with more than three decades of expertise in the field. Under his reputed leadership, Akshaya has become a leading player in Thrissur's real estate landscape.



A UNIQUE PROJECT IN CULTURAL CAPITAL

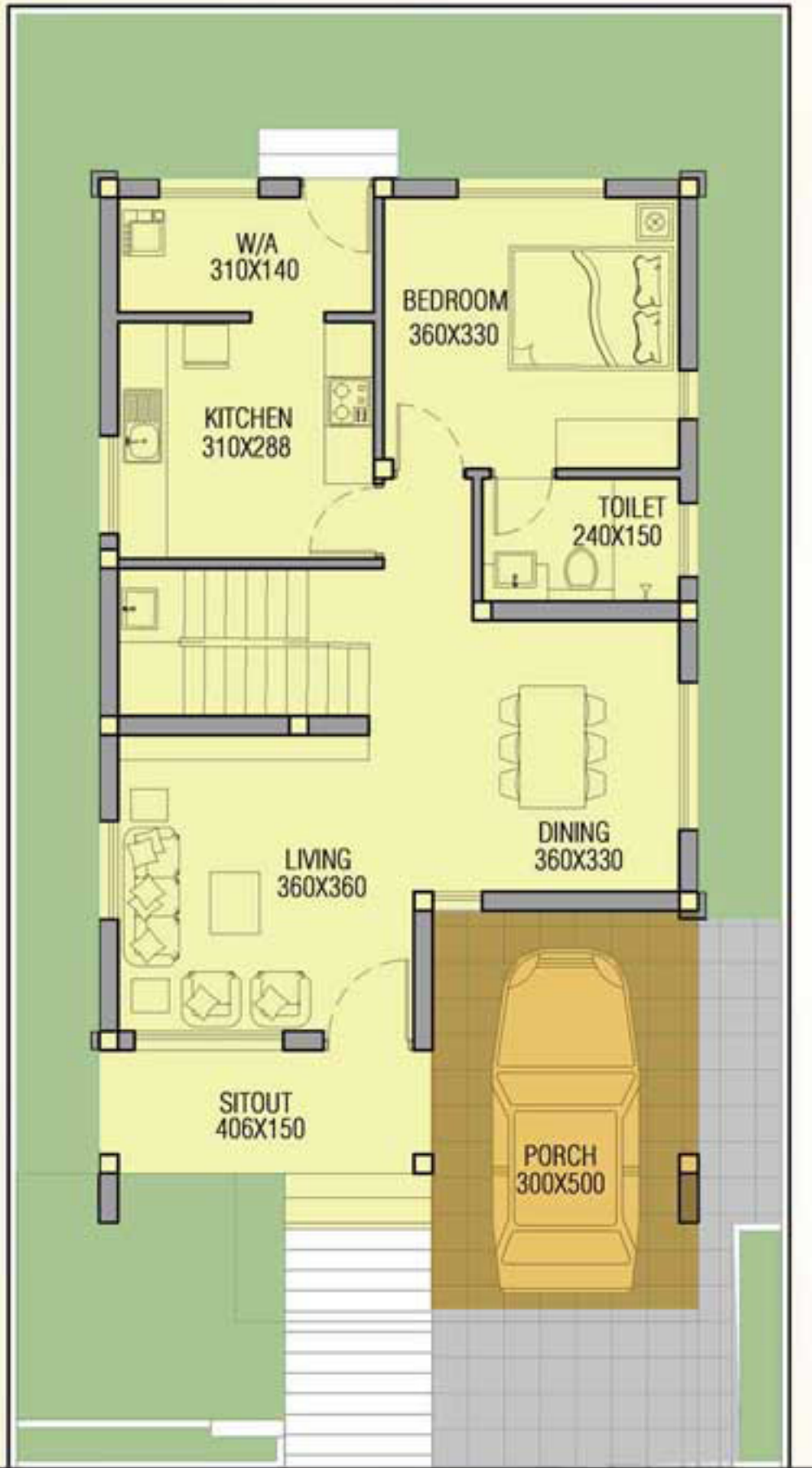
The breeze at Thrissur has the scent of history. The Place was one of the prominent locations in history from the days of the SakthanThampuran who ruled the land. It assumes the distinctive position in history as the place and is the fourth largest city, the third largest urban agglomeration in Kerala. City located around a small hillock mounted by the Vadakkumnathan temple can be seen scientifically planned. Actually the city is built around the vast open space called 'Thekkinkadumaidanam' surrounding the centrally located Vadakkumanatha temple. Around the maidan lies the 'Swaraj Round', the circular ring road, with several radial roads starting from it. The raised centre and the slopes starting from there are surrounded by green, fertile wetlands used for cultivating paddy. This high lying, greenest part of the city is an important link that connects it with the outer areas. You are invited to live on 'the pooram city'!



VILLA TYPE -A

TOTAL SQFT- 1953

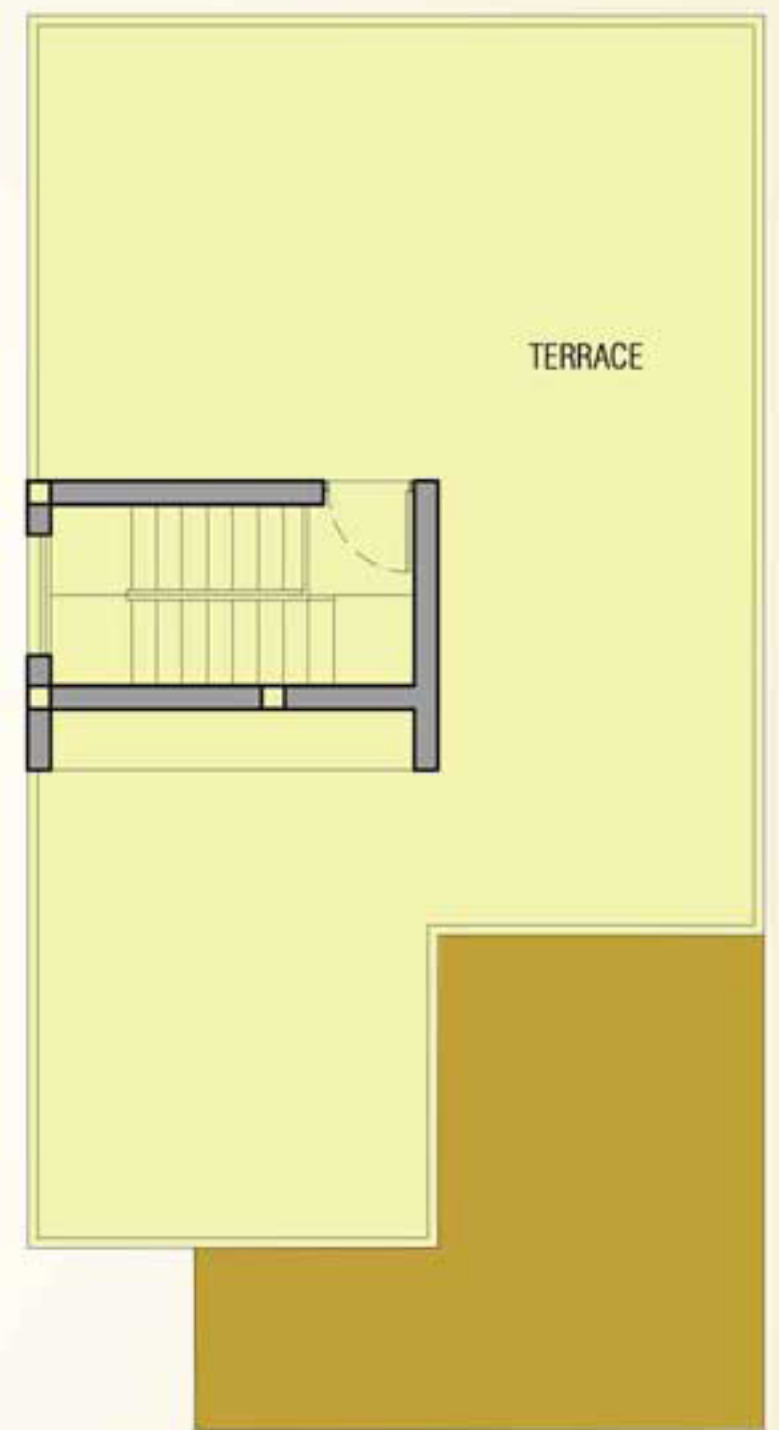
FLOOR PLAN



GROUND FLOOR PLAN
Area- 1016Sqft



FIRST FLOOR PLAN
Area- 838 Sqft



STAIR CABIN
Area- 99 Sqft



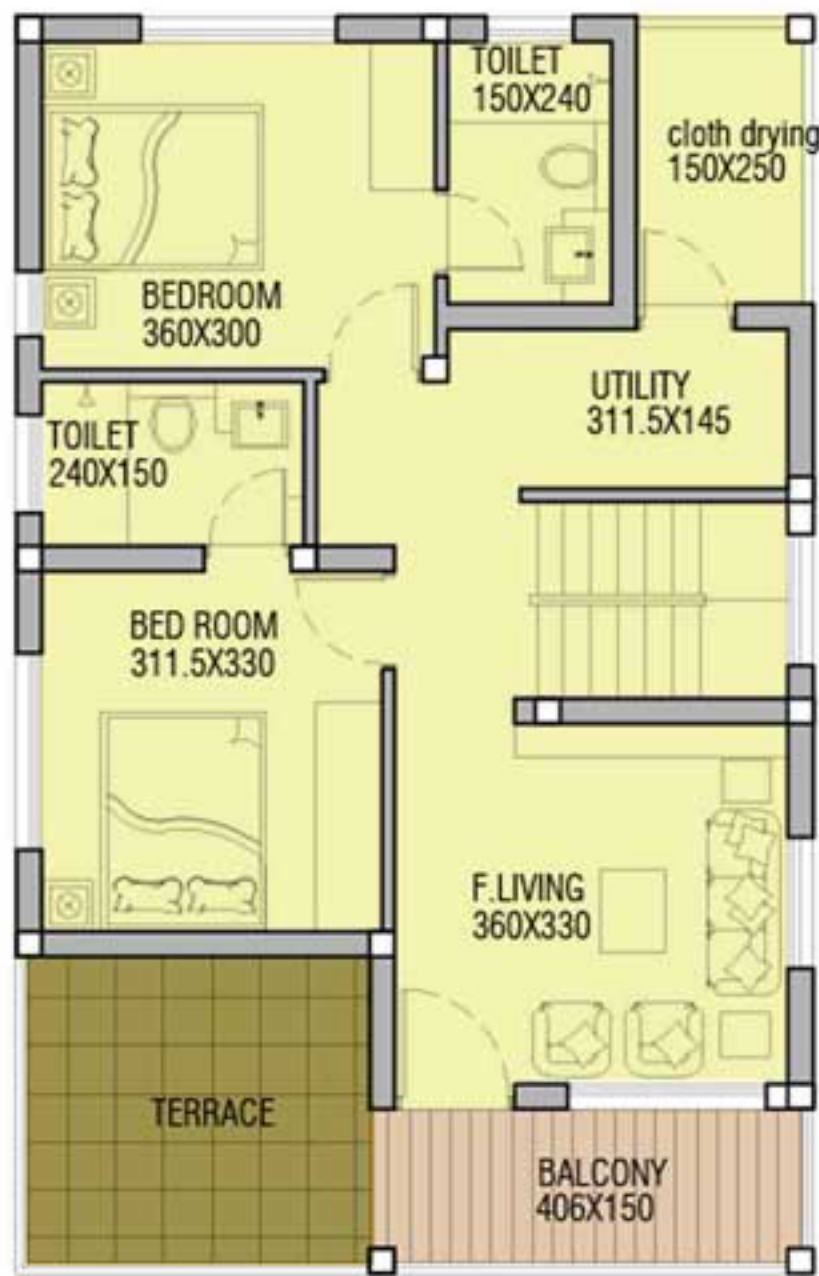
VILLA TYPE -B

TOTAL SQFT- 1821

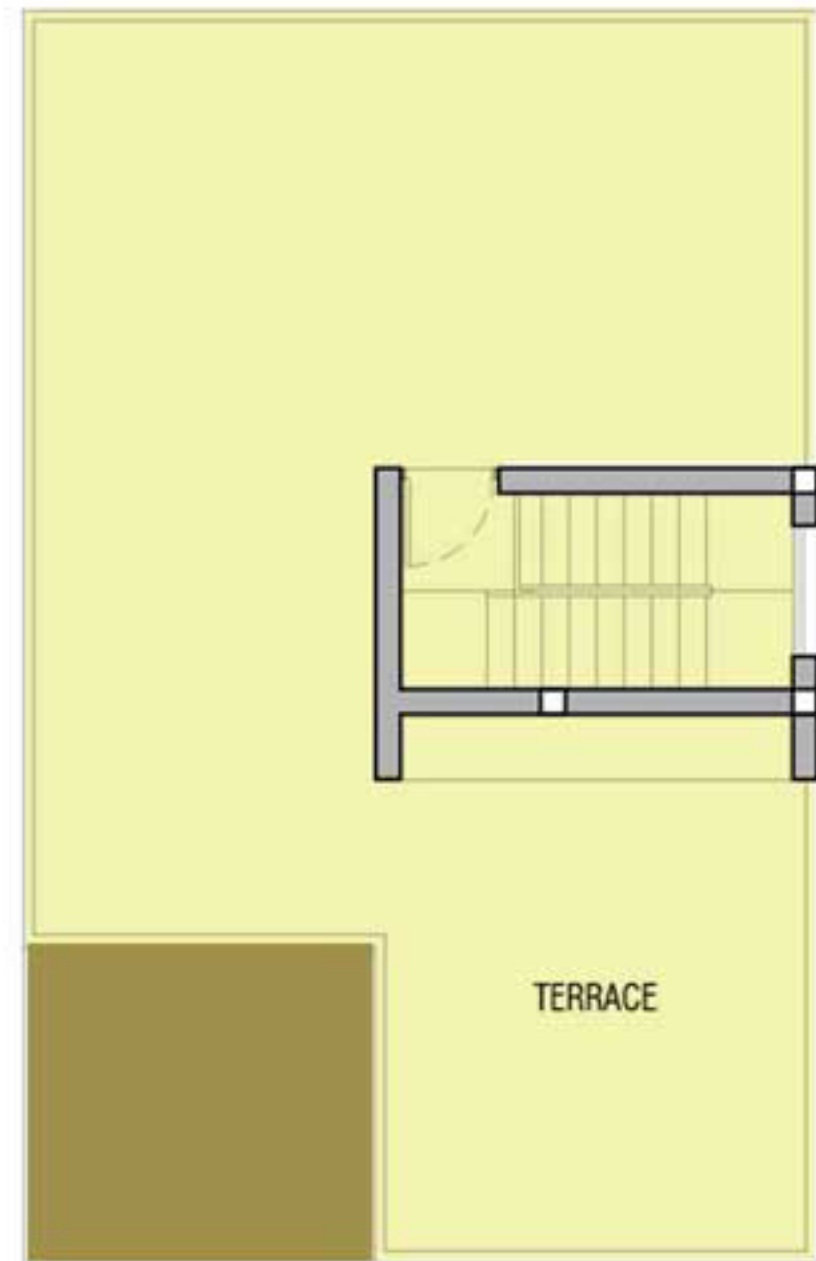
FLOOR PLAN



GROUND FLOOR PLAN
Area- 921 Sqft



FIRST FLOOR PLAN
Area- 801 Sqft



STAIR CABIN
Area- 99 Sqft



PLOT LAYOUT



PLOT NO.	TYPE	LAND AREA	VILLA AREA
1	A	4.28 cents	1943 Sqft
2	A	4.37 cents	1943 Sqft
3	A	4.22 cents	1943 Sqft
4	B	4.15 cents	1802 Sqft
5	B	4.09 cents	1802 Sqft
6	B	4.10 cents	1802 Sqft
7	B	4.24 cents	1802 Sqft
8	A	5.18 cents	1943 Sqft
9	A	5.33 cents	1943 Sqft
10	A	5.49 cents	1943 Sqft
11	B	4.11 cents	1802 Sqft
12	B	4.11 cents	1802 Sqft
13	B	4.16 cents	1802 Sqft
14	A	4.58 cents	1943 Sqft
15	A	4.89 cents	1943 Sqft
16	A	4.56 cents	1943 Sqft
17	A	4.17 cents	1943 Sqft
		76.03 cents	32044 SQFT
PLOT AREA		76.03 cents (73.73 %)	
RECREATIONAL AREA		10.34 cents (10.03 %)	
ROAD AREA		16.75 cents (16.24 %)	
TOTAL LAND AREA		103.12 cents	





AMENITIES

- Automatic Gate for Main Entrance
- Paved Driveway with Street Lighting
- Multipurpose Recreation Area
- Childrens Play Area
- CCTV Camera for Common Area
- Intercom Facility



1st Floor, Variyath Plaza, Marar Road, Round West, Thrissur 680 001, Kerala

Call/WhatsApp : **+91 9747 000 500** **+91 9744 000 500**

www.akshayadevelopers.com info@akshayadevelopers.com [/akshayaproperties](https://www.facebook.com/akshayaproperties)